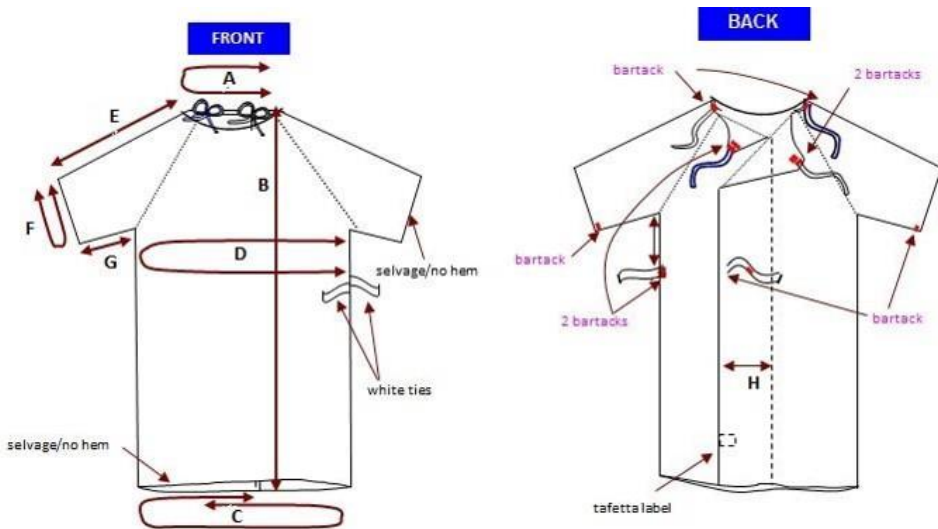


# Product Specification

<b>Product Code:</b>	GOWN/B (XS-Baby), GOWN/CS(S), GOWN/CM (M), GOWN/CL (L)
<b>Product Description:</b>	Patient Gown Child
<b>Size:</b>	Baby, Small, Medium & Large
<b>Weight:</b>	135gsm
<b>Weight Tolerance:</b>	10%
<b>Fabric:</b>	50/50 Polyester Cotton
<b>Fabric Tolerance:</b>	5%
<b>Print:</b>	Novelty Print on White Background with colour coded neck ties to denote size

Manufacturing (cm)	Tolerance +/-	XS	S	M	L	Universal	Bariatric
A- Neck Circumference	2cm	26cm	32cm	36cm	40cm	N/A	N/A
B- Centre Back Length	2cm	26cm	53cm	70cm	90cm	N/A	N/A
C- Sweep	3cm	53cms	80cm	100cm	116cm	N/A	N/A
D- Chest Circumference (2cms below armpit)	3cm	53cm	74cm	86cm	108cm	N/A	N/A
E- Sleeve/Arm Length	2cm	37cm	18cm	19cm	20cm	N/A	N/A
F- Sleeve/Cuff Circumference (arm opening)	2cm	18cm	28cm	33cm	35cm	N/A	N/A
G- Inseam	N/A	N/A	N/A	N/A	N/A	N/A	N/A
H- Overlap	N/A	N/A	N/A	N/A	N/A	N/A	N/A
I- Side Tie Location (away from armpit)	N/A	N/A	N/A	N/A	N/A	N/A	N/A
J- Slit Back Length	N/A	N/A	N/A	N/A	N/A	N/A	N/A



Supplier Guarantee: All materials used in the manufacture of this product to be first quality only. No additives have been used in the manufacture of these goods. Guaranteed against any defects in materials or workmanship. Performance and durability to be able to last at least 150 launderings and capable of withstanding the stringent laundering parameters expected by a healthcare laundry following the guidelines as set out in HSG (95)18. Performance and durability is subject to use of recommended care and laundering instructions